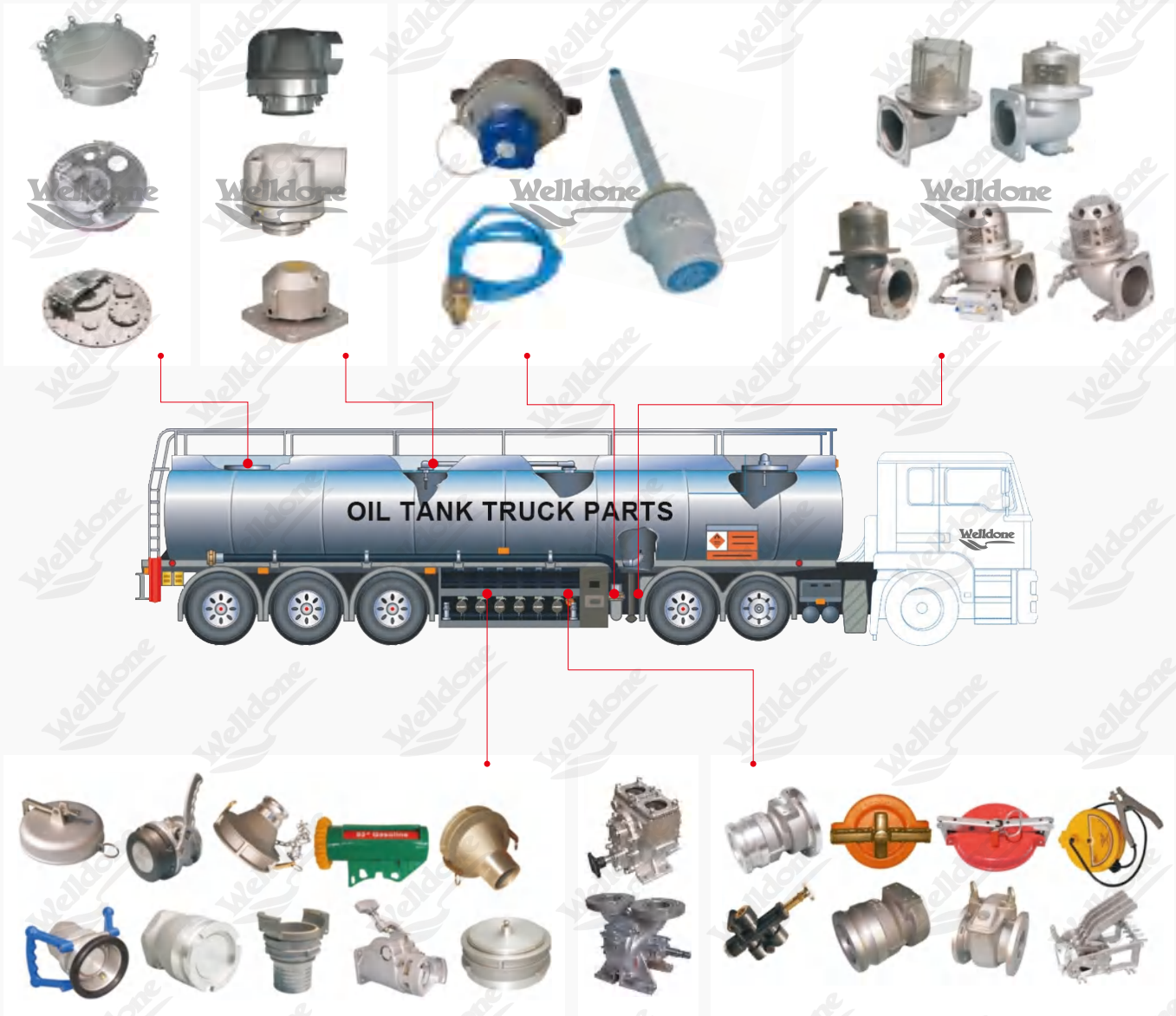


油罐车配件

OIL TANK TRUCK PARTS

DIFFERENT PARTS CAN CHOOSE!

WE ALSO CAN DO OEM FOR YOU!



OIL TANK TRUCK PARTS FROM WELLDONE MACHINE, WITH HIGH QUALITY, REASONABLE PRICE! WAITING FOR COOPERATION!

WITH HIGH QUALITY, REASONABLE PRICE!

WAITING FOR COOPERATION!

Website: www.wdmachine.com / Email: sales@welldonemachine.com / WhatsApp: +86-15825667273

人孔连接法兰和人孔盖 Manhole connection flange And Manhole covers



用途和特点 Use and characteristic

人孔盖安装于槽车油罐顶部，具有内呼吸和和紧急排气功能。内呼吸阀使油罐在运油过程过程中内部压力与外界压力保持平衡。紧急排气装置在罐内压力急剧升高的状况下，会自动跳开，释放内部压力。即使在油罐发生意外的状况下，内呼吸阀的防溢流装置依然保持密封，罐内介质不会渗漏从而防止重大事故发生。人孔盖上可安装废气回收阀、量油孔、防溢探杆等。

On top of a tank car tank manhole covers installation,with functions of breathing and emergency vent.Within breathing valve internal pressure in the process of oil tank and the pressure balance.Emergency air exhaust devices in a tremendous rise of pressure. Even in tanker accident conditions,the respiration valves of the overflow device remained sealed,medium tank from leaking in order to prevent major accidents.Manhole cover can be installedon the exhaust gas recycling valve,oil hole,spill-proof sheath maerial,etc.

呼吸阀开启状态 Respiration valve open	高出外界压力6-8kpa Higher pressure 6-8kpa 低处外部压力2-3kpa Lower the external pressure2-3kpa
呼吸阀关闭状态 Breathing valve closed	内压与外压差值-2-6kpa Pressure inside and outside differential pressure value-2-6kpa
内压与外压极限Pressure and press with limit with outside inside	21-32kpa
排气量 Displacement	6000-7000m³/n

铝制人孔盖 Aluminum manhole covers

主要技术参数 Technical Specification

型号 Model		WDMH560	WDMH580
尺寸 Size (mm)	D	Ø560	Ø580
	D0	Ø530	Ø542
尺寸 Size (mm)	D1	Ø482	Ø498
	D2	Ø130	
	H	72	
	L	370	
	b	12	
	Z-d	24- Ø12	
	Z-m	8-M10	
公称压力 Nominal pressure		0.6MPa	

圆弧齿轮油泵 Circular arc gear oil pump



安装图片 Installation pictures

材料 Material

主体:铸铁、铝合金 Main body: cast iron, aluminum alloy
 齿轮:铝 Gear:Aluminum
 密封:骨架油封、机械密封 Seal: skeleton oil seal, mechanical seal

特性 characteristic

齿轮泵采用双圆弧轮结构，是适应输油泵需求发展的新产品，属于高效节能的特殊齿轮泵，具有流量大，压力高体积小，噪声低，输入转速低，自吸性强，安装维修方便等优点。

The gear pump adopts a double arc wheel structure and is a new product that meets the development needs of oil pumps. It is a special gear pump with high efficiency and energy saving. It has the advantages of large flow, high pressure, small volume, low noise, low input speed, strong self-priming, and easy installation and maintenance.

使用 Use

WDCB圆弧齿轮油泵是属于高效节能型产品，它采用软金属齿面设计，可有效的消除齿面接触所产生的热量，同时防止了静电的集聚，安全性能较高。适用于输送不含固体颗粒，无腐蚀性的液体，输送介质粘度范围5cst~53cst，是油罐车理想选用动力泵。

WDCB arc gear oil pump is a high-efficiency and energy-saving product. It adopts soft metal tooth surface design, which can effectively eliminate the heat generated by tooth surface contact, while preventing the accumulation of static electricity and ensuring safety. Can be higher. It is suitable for transporting liquids that do not contain solid particles and are non-corrosive. The viscosity range of the transport medium is 5cst~53cst. It is an ideal power pump for oil tank trucks.

主要技术参数 Technical Specification

型号 Model	WDCB-1000/5A	WDCB-1000/5C
规格 Specification	3"	3"
工作压力 Work Pressure	0-0.5MPa	
流量 Flow	1000L/min	
转速 Rotating Speed	960r/min	
功率 Power	11Kw	
扬程 Lift	60m	
吸程 Suction Lift	7m	
使用介质 Use Media	柴油、汽油、煤油 Diesel, gasoline, kerosene	
包装尺寸 Package Size	45×33×45cm	45×33×45cm
净重 Net Weight	45kg	28kg
毛重 Gross Weight	53kg	36kg
包装 Package	1只/木箱	1只/纸箱

圆弧齿轮油泵 Circular arc gear oil pump

材料 Material

主体:低压铸造铝合金 Body: low pressure die-cast aluminum alloy

密封:氟橡胶 Seal: fluororubber 轴:不锈钢 Shaft: stainless steel

手柄:钢 Handle: steel

球:铝合金 Ball: aluminum alloy



使用 Use

Wd971阀安装油罐车底部侧边, 适用于非腐蚀性管道输送启闭控制, 有材料配置合理结构紧凑, 重量轻, 体积小, 使用方便等, 设有限位装置, 安全可靠。WD971 Valve Is Installed On The Bottom Side Of The Tank Truck, Suitable For Non-corrosive Pipeline Transportation Opening And Closing Control, With Reasonable Material Configuration, Compact Structure, Light Weight, Small Size, Easy To Use, Etc, With Limit Device, Safe And Reliable.

主要技术参数 Technical Specification

规格 Specifications	3"
工作压力 Working pressure	0.6MPa
温度范围 Temperature range	-02~70 ℃
操纵方式 Operation method	手动 Manual
连接方式 Connection method	法兰式 Flange type
使用介质 Used medium	柴油 汽油 煤油 Diesel Gasoline Kerosene
包装尺寸 Packing size	58x34x42cm
净重 Net weight	21kg
毛重 Gross weight	23kg
包装 Packaging	4只/纸箱 pcs/carton

底部灌装接头 Bottom filling connector

使用 Use

WD808API底部灌装接头能与所有各种按APIRP1004规格要求配装的4底部灌装接头配合使用, 在汽油类装卸时使用能大大减少断开时的液体跑损。设计成能够高效灌装所有各种燃料油品-标准配备高性能密封件, 具有优异的耐磨损和耐油性能。设计成不易引起装车架的绞合混乱的结构-其所采用的新型、方便、自动对齐式结构能确保与油罐车接头的紧密耦合,并防止侧向受力。

WD808API bottom filling joint can be used with all kinds of 4 bottom filling joints equipped according to APIRP1004 specifications. It can be used in gasoline loading and unloading to greatly reduce the loss of liquid when disconnected. Designed to be able to efficiently fill all kinds of fuel oil products-standard high-performance seals with excellent wear and oil resistance. Designed to be a structure that is not easy to cause twisting confusion of the loading frame-the new, convenient, automatic alignment structure it adopts can ensure tight coupling with the tank truck joint and prevent lateral force.

材料 Material

主体:铝合金 Body: Aluminum alloy

轴:不锈钢 Shaft: Stainless steel

密封:氟橡胶 Seal: Fluororubber

提升阀:铝合金 Lift valve: Aluminum alloy

手柄:铝合金 Handle: Aluminum alloy

承压连杆:不锈钢 Pressure connecting rod: Stainless steel



过滤器Filter

材料 Material

主体:铝Body: Aluminum 弹簧:不锈钢Spring: Stainless steel
密封:丁腈橡胶 Seal: Nitrile 五金件:钢Hardware: Steel



使用Use

过滤器是用于过滤各种油品，并确保油品的清洁，通常安装在各种管道上，在输送油品过程中阻拦固体颗粒杂质，快速方便的取滤芯消除杂质。结构新颖、重量轻、过滤阻力小、安装清洗方便。

The filter is used to filter various oil products and ensure the cleanliness of the oil products. It is usually installed on various pipelines to block solid particle impurities during the oil transportation process, and quickly and conveniently remove the filter element to eliminate impurities. It has a novel structure, light weight, small filtering resistance, and is easy to install and clean.

特性characteristic

轻质铸造铝结构,具有强度, 氧化处理 Lightweight cast aluminum construction for strength, anodized
装有一个容易装卸清洗滤网 Equipped with an easily accessible filter for cleaning
过滤网对准正确位置装配 Filter is aligned in the correct position for assembly
盖子很容易拆装 The cover is easily removed
去除了所有插销和螺栓部件，更易维护 All latches and bolts removed for easier maintenance
无需特殊工具即可进行拆卸及组装 No special tools required for disassembly and assembly

主要技术参数 Technical Specification

型号 Model	WDZ-50	WDZ-80	WDZ-80	WDZ-100
规格 Specification	2"	3"	3"	4"
工作压力 Specification	0.6MPa	0.6MPa	0.6MPa	0.6MPa
连接方式 Connection	4孔法兰	4孔法兰	8孔法兰	4孔法兰
流量范围 Flow range	600-1500L/min			
过滤目数 Filter mesh	80目/60目			
使用介质 Use Media	柴油 汽油 煤油 Diesel Gasoline Kerosene			
包装尺寸 Package Size	62×44×42cm	62×44×42cm	62×44×42cm	45×32×39cm
净重 Net Weight	34kg	41kg	35kg	22kg
毛重 Gross Weight	36kg	43kg	37kg	24kg
包装 Package	8只/纸箱	8只/纸箱	8只/纸箱	4只/纸箱

圆弧齿轮油泵 Circular arc gear oil pump

材料 Material

主体:低压铸造 Body: low pressure casting 弹簧:钢 Spring: steel
轴:不锈钢 Shaft: stainless steel 五金件:不锈钢 Hardware: stainless steel
密封:丁腈橡胶 Seal: nitrile rubber

使用 Use

WD901PELOE 阀安装油罐车底部侧边, 适用于非腐蚀性管道输送启闭控制, 有材料配置合理结构紧凑, 重量轻, 体积小, 使用方便等, 设有限位装置, 安全可靠。从玻璃视镜里可以观察到流体的经过。

WD901PELOE valve is installed on the bottom side of the tanker truck, suitable for non-corrosive pipeline transportation opening and closing control, with reasonable material configuration, compact structure, light weight, small size, easy to use, etc., with limit device, safe and reliable. The fluid can be observed from the glass mirror.

特性characteristic

轻质压铸铝结构, 具有强度, 阳极氧化处理。

管状视镜设计使得白天和晚上, 对介质流动的监视更加方便

采用格卡式结构, 方便快速连接

操作简单耦合快速

Lightweight die-cast aluminum structure, strong, anodized.

The tubular sight glass design makes it easier to monitor the flow of media during the day and at night

The grid card structure is used for easy and quick connection

Simple operation and fast coupling

主要技术参数 Technical Specification

型号 Model	WDCB-1000/5A	WDCB-1000/5C
规格 Specification	3"	3"
工作压力 Specification	0-0.5MPa	
操纵方式 Operation mode	手动 Manual	
连接方式 Connection mode	法兰 Flange	
温度范围 Temperature range	-20~70° C	
使用介质 Use Media	柴油、汽油、煤油 Diesel, gasoline, kerosene	
包装尺寸 Package Size	45 × 33 × 45cm	45 × 33 × 45cm
净重 Net Weight	45kg	28kg
毛重 Gross Weight	53kg	36kg
包装 Package	1只/木箱	1只/纸箱



全天候(阻火)呼吸阀 All-weather (fire resistance) breathing valve



主要技术参数 Technical Specification

A	正压: 355Pa(36毫米水柱) +355Pa(36mmH2O)	负压: 295Pa(30毫米水柱) -295Pa(30mmH2O)
B	正压: 980Pa(100毫米水柱) +980Pa(100mmH2O)	负压: 295Pa(30毫米水柱) -295Pa(30mmH2O)
C	正压: 1765Pa(180毫米水柱) +1765 Pa(180mmH2O)	负压: 295Pa(30毫米水柱) -295Pa(30mmH2O)

油气回收阀 Oil and gas recovery valve



用途和特点 Use and characteristic

油气回收阀安装在油罐车灌顶上或人孔盖上, 该阀可将油料挥发产生的油气全部回收油库的油罐内。油罐车装油时, 该阀开启, 上升的介质将油气上推, 通过油气回收系统, 回到油库罐内。卸油时, 回到油库罐内。卸油时, 回收的气体直接在油车罐内。该阀还可与罐内的气动切断阀连接, 由气源控制开启与关闭。

Recovery of oil and gas valve installed on the tank truck empowerments or manhole cover ,the valve can be oil volatilization of oil and gas recovery in the oil tank of oil depots.Tanker loading,the valve opens and rise of medium to push on the oil and gas,through the oil and gas recovery system,back to the oil storage tank.When unloading,back to the oil storage tank, When unloading,recovery of gas directly into the gasoline tank.The valve can also be connected to the bottom of pneumatic cut-off valve,controlled by gas source opening and closing.

主要技术参数 Technical Specification

尺寸 Size (mm)	D	Ø148
	D1	Ø130
	D2	47
	L	165
	Z-d	8-Ø11
公称压力 Nominal pressure		0.6MPa

气动切断阀(气动海底阀) Pneumatic cut-off Valve



用途和特点 Use and characteristic

气动切断阀安装于油罐车罐体底部，可进行下装加油，该阀内部压力较小，流量大，阀体法兰边有切断槽，在油罐车发生意外时，由于断槽处无法承载过大冲击力，车体管路与罐体会自动断开，而自动对中柱塞和耐用弹簧会依旧保持密封，罐内介质不会泄露，从而保证油罐安全。当无气源或其他原因无法打开时，可拆开气缸活塞罗杆，手动开启。

Pneumatic cut-off valves installed on the bottom of the tank truck tanks,to refuel in the bottoms,the valve internal pressure is small,large flow, the valve flange has cut slot ,when the tanker accident,cannot bear too big impact due to the fault trough,car body line with tanks will automatically disconnect,and automatically for the plunger and durable spring will still keep seal,medium tank does not leak,so as to ensure the safety of the tank,When there is no air or other reasons can not open,can disassemble the cylinder piston rod, a manual open.

主要技术参数 Technical Specification

规格Specifications	4"
最大流量Maximum flow	2500L/min
工作压力Working pressure	0.6MPa
连接方式Connection method	法兰 Flange
需气压力Required air pressure	0.4-0.8MPa
温度范围Temperature range	-20~+70° C
使用介质Used medium	柴油、汽油、煤油 Diesel, gasoline, kerosene
操纵方式Operation method	气动/手动
净重Net weight	22kg
毛重Gross weight	24kg
包装Packaging	4件/纸箱

卸油阀 Unloading valve



用途和特点 Use and characteristic

卸油阀安装于油罐车侧下方，可快速卸油。前端连接斜70度软管接头（或斜70度变径接头）。该阀内部压力较小，流量大出口处平底结构使介质全部排出，减少环境污染。该阀采用齿轮带动齿条开启弹簧，轻松便捷。前端接口可与美国API接头对接。
Unloading valve is installed on the side of the oil tank car, which can quickly unload oil. The front end of the connecting hose (or inclined 70 degrees 70 degrees oblique diameter joint). The internal pressure of the valve is small, the flow is large, the outlet of the flat bottom structure make the medium all the discharge, reduce environmental pollution. The valve uses a gear to drive the rack to open the rack to open the spring, easy and convenient. The front end interface can be docked with the API connector of the United States.

主要技术参数 Technical Specification

尺寸 Size (mm)	D	Ø165
	D1	Ø172
	D2	Ø150
	L	176
	Z-d0	8- Ø11
	Z-d1	4- Ø14
公称压力 Nominal pressure		0.6MPa

Fire resistance vacuum pressure cap



安装在排气管的顶端约4.5米高位处，压力帽设定在+3"。
水柱时排放油气，在-8" 水柱时打开吸入空气，其作用时保持地下油罐内压。
Installed in the top of the exhaust pipe is about 4.5 meters high, the pressure cap is set at +3".
Discharge of oil and gas in the water column, when the water column in the -8 to open the suction air, and its role in maintaining the internal pressure of the underground tank.

主要技术参数 Technical Specification

规格 Specifications	DN40 法兰式 Flange	DN50 法兰式 Flange	DN50 内螺纹 Female thread
螺栓孔中心远直径 mm Bolt hole center circle diameter	110	125	NPT2"
总长度 mm Total length	215	215	155
工作压力 MPa Working pressure	1750Pa~2000Pa	1750Pa~2000Pa	1750Pa~2000Pa
材质 Material	铝合金 Aluminium alloy	铝合金 Aluminium alloy	铝合金 Aluminium alloy
重量 KG Weight	3.5	3.5	1.5

铝合金管道阻火器 Aluminium alloy pipe flame arrester

管道阻火器系新型可燃气体管道阻火器，属更新换代的新产品。管道阻火器结构合理，阻火层采用不锈钢材料制造，耐腐蚀易于清洗。壳体采用不锈钢，碳钢及铸钢多种材料，可满足各种不同工艺管道的需要。Flame arrester, a new type of flame arrester for pipeline, is a new product of the new generation. The structure of the flame arrester is reasonable, and the fire resistance layer is made of stainless steel, and the corrosion resistance is easy to clean. The shell is made of stainless steel, carbon steel and cast steel, which can meet the needs of various process piping.



主要用途 Main application

- | | | |
|---|--|---------------------------------|
| 1. 输送可燃性气体的管道上 | 4. 加热炉燃料气的管网上 | 7. 煤矿瓦斯排放系统 |
| 2. 火炬系统 | 5. 气体净化通化系统 | 8. 阻火器连续13次以亚音速火焰试验，每次都能阻止火焰的通过 |
| 3. 油气回收系统 | 6. 气体分析系统 | 9. 水压试验2.4MPa无渗漏 |
| 1. Pipeline for transporting flammable gas. | 2. Flare system. | 3. Oil gas recovery system. |
| 4. Heating furnace fuel gas pipe line. | 5. Gas purification Tonghua system. | 6. Gas analysis system. |
| 7. Coal mine gas drainage system. | 8. Flame test for 13 times in a row to prevent the flame from the flame. | |
| 9. Hydrostatic test 2.4MPa no leakage. | | |

主要技术参数 Technical Specification

规格 Specifications	DN40	DN50
螺栓孔中心远直径 Bolt hole center circle diameter	110mm	125mm
总长度 Total length	160mm	160mm
工作压力 Working pressure	0.6MPa	0.6MPa
材质 Material	铝合金Aluminium alloy	铝合金Aluminium alloy
重量 Weight	3.5KG	3.5KG

油气回收接头 Oil and gas recovery joint



主要用途 Main application

油气回收接头安装于车体侧下方靠近卸油阀处，采用快速连接结构，便于装卸时对接，是罐车与油库，加油站油气回收系统连接的一部件。阀体上通常安装有气动联锁阀，与边板通气联通。

Oil and gas recovery connector installed on the bottom side of the body near the unloading valve, the quick connecting structure, convenient loading and unloading docking, tanker and oil depot, gas station oil vapor recovery system connected component. Body is usually fitted with pneumatic interlock valve, and the side plate ventilation Unicorn.

主要技术参数 Technical Specification

规格 Specifications	DN65法兰式Flange	DN80内螺纹Female Thread	DN80法兰式Flange	DN100法兰式Flange
螺栓孔中心远直径 Bolt hole center circle diameter	145	NPT3"	160	180/170
总长度 Total length	180	150	180	180
工作压力 Working pressure	0.6	0.6	0.6	0.6
材质 Material	铝合金Aluminium alloy	铝合金Aluminium alloy	铝合金Aluminium alloy	铝合金Aluminium alloy
重量 Weight	2.5	2	3	3.5

三通球阀 Three way ball valve

主要用途 Main application

四位三通球阀是一种通形成三种液流通道的球阀。该阀可用于洒水车、油罐车等非腐蚀性介质的液流系统中。该阀能快速改变液流方向，操作方便。

Three way ball valve is a valve through the formation of three kinds of liquid flow channel. The valve can be used for watering car, tank car and other non corrosive medium of the liquid flow system. The valve on the direction of rapid change in liquid flow, easy to operate.

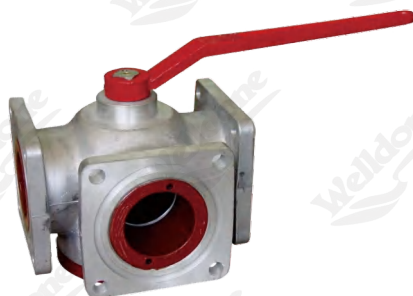
主要技术参数 Technical Specification

规格 Specifications	DN40	DN50	DN65	DN80
螺栓孔中心远直径 Bolt hole center circle diameter	115	130	155	165
总长度 Total length	150	170	200/220	220
工作压力 Working pressure	0.6	0.6	0.6	0.6
材质 Material	铝合金\SS304 Aluminium\SS304	铝合金\SS304 Aluminium\SS304	铝合金\SS304 Aluminium\SS304	铝合金\SS304 Aluminium\SS304
重量 Weight	3.5	4	6	7.5

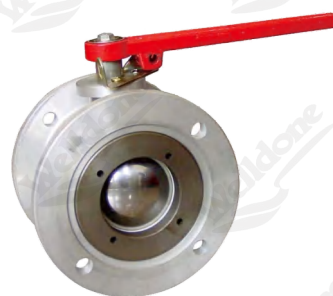
圆直通球阀 Round straight ball valve

主要技术参数 Technical Specification

规格 Specifications	DN40	DN50	DN65	DN80	DN100
螺栓孔中心远直径 Bolt hole center circle diameter	110	125	145	160	180/170
总长度 Total length	85	90	110	130	145
工作压力 Working pressure	0.6	0.6	0.6	0.6	0.6
材质 Material	铝合金\SS304 Aluminium\SS304	铝合金\SS304 Aluminium\SS304	铝合金\SS304 Aluminium\SS304	铝合金\SS304 Aluminium\SS304	铝合金\SS304 Aluminium\SS304
重量 Weight	2.5	3	4	5.5	6.5



三通球阀 Three way ball valve



圆直通球阀 Round straight ball valve

方直通球阀 Square straight ball Valve

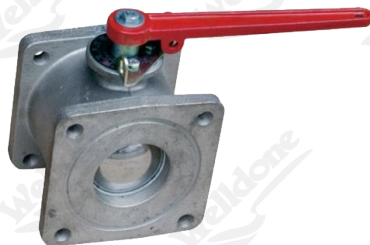
主要技术参数 Technical Specification

规格 Specifications	DN40	DN50	DN65	DN80	DN100	DN125	DN150
螺栓孔中心远直径 Bolt hole center circle diameter	115	130	155	165/175	195	245	295
总长度 Total length	80	90	110	130	145	200	220
工作压力 Working pressure	0.6	0.6	0.6	0.6	0.6	0.6	0.6
材质 Material	铝合金 SS304 Aluminium	铝合金 SS304 Aluminium	铝合金 SS304 Aluminium	铝合金 SS304 Aluminium	铝合金 SS304 Aluminium	铝合金 SS304 Aluminium	铝合金 SS304 Aluminium
重量 Weight	2.3	2.5	3.5	5	6	12.5	18.5

滤网三通 Mesh Three Pass way

主要技术参数 Technical Specification

型号 Model		2"	2.5"	3"
尺寸 Size (mm)	L	184	225	225
	L1	172	210	210
	H		95	
	A	120	140	150
	D	130	155	165
	D	96	110	110
	Z-d		4-F14	
公称压力 Nominal pressure		10MPa		



方直通球阀 Square straight ball Valve



滤网三通 Mesh Three way

单向球阀 One Way Ball Valve



主要技术参数 Technical Specification

规格 Specifications	DN50	DN65	DN80	DN100
螺栓孔中心远直径 Bolt hole center circle diameter	125	145	160	180/170
总长度 Total length	155	175	185	210
工作压力 Working pressure	0.6	0.6	0.6	0.6
材质 Material	铝合金Aluminium alloy	铝合金Aluminium alloy	铝合金Aluminium alloy	铝合金Aluminium alloy
重量 Weight	3.2	3.5	4.5	7

高压绿化喷枪

绿化喷枪与洒水车配套，可应用于市政、园林绿化，公路建设等喷水专用。该枪能360° 旋转。仰视角度为-10° -90° 。操作方便、灵活。
法兰连接孔距中心为 122。该枪扬程为60米，射程40米。

Greening spray gun and watering car matching, can be applied to municipal, landscape, road construction, etc..The gun is capable of 360 degree rotation.From the angle of-10° -90° .Easy and flexible operation. Flange connection hole distance center is 122. The gun head is 60 meters, with a range of 40 meters.



自动卸油防溢阀 Automatic oil discharging and overflow valve

自动卸油防溢阀是独立二级正向节流阀，其设计用于防止在进行重力油品输送时地下储罐(UST)卸油溢出。当卸油过程中地下油罐的液位达到储罐容量的92%左右时，储罐中的油品会使阀门的第一级低位浮子上升。于是卸油防溢阀的主提升阀启动工作，将卸油流量降低到正常油量的10%左右。主提升阀关闭造成的流量突然下降会对卸油管产生“管路冲击”，并将储罐已接近95%容量这一情况通知给卸油阀司机。卸油司机然后会停止向储罐卸油，断开并排空卸油管中的油。第二级高位浮子将在油位达到储罐容量的95%时关闭卸油。

Automatic unloading overflow valve is independent secondary forward throttle valve. The design for preventing gravity oil transmission in underground storage tanks (UST) unloading oil overflow. When unloading oil in the process of underground oil tank liquid level reaches about 92% of the storage capacity and oil storage tanks will be the valve first level low float upward. So the main poppet valve unloading overflow valve to start working, the unloading flow decreased to about 10% of the normal amount of oil. The main lift valve closed flow caused by the sudden drop "line shock" of oil discharge pipe, and the tank is close to 95% capacity of the notice to the unloading valve driver. The oil unloading driver then stops discharging the oil to the storage tank, and the oil in the unloading oil pipe is broken off and discharged. Close unloading second high float tank capacity will reach 95% in the oil level.

优势 Advantage

弹簧加载的二级截流挡板可降低管路冲击。

Spring loaded two stop damper can reduce the pipeline impact.

垂直浮体设计，即使当储罐已满时也可以卸下阀门。

Vertical floating body design, even when the tank is full, you can also remove the valve.

检查测试端口。

Check test port.

管道底部带有螺纹。

Pipe bottom with screwthread.

安装 Installation

专为地下储蓄应用场合设计。仅适用重力卸油。不要尝试将此产品用于地上储蓄，否则阀门将不工作并导致非常危险的状况。

Design for the application of underground storage tanks. Only for gravity unloading. Don't try this product for the ground tank, otherwise the valve will not work and lead to a very dangerous situation.

主要技术参数 Technical Specification

说明 explain		4" 卸油防溢阀，配工厂卸油铝管 4" unloading overflow valve, with oil discharge tube factory	4" 卸油防溢阀，不配工厂卸油铝管 4" unloading overflow valve, with oil discharge tube factory
A	Inch	60	仅阀门 Only valve
	mm	1524	
B	Inch	96	
	mm	2438.4	
C	Inch	172	
	mm	4368.8	



双密闭量油孔 Double - sealed oil measuring hole



用途和特点 Use and characteristic

加油站量油孔是加油站工作人员每天必用的计量入口，量油孔法兰盘与其下方的短颈法兰盘相连接，设置在油罐顶上，量油孔与油罐内腔相通。目前国内普遍使用的量油孔为平移的转盖，在不测量时加一把普通挂锁，有多种方法可将其破坏、非法开启以及密闭性能不好，容易导致油气泄露污染环境。因此传统的量油孔不能有效的使用在现代国家大力倡导环保环境下。加油站油气回收量油孔主要特点:具有翻盖式密闭孔盖和球芯密闭双密闭设计，防止油气泄漏的作用。双挂锁结构设计，起到防撬及人外力破坏难度加大。翻盖式开启设计，翻盖式能密闭的孔盖和上锁锁紧手轮，为了防止关闭时孔盖与铁器撞击产生火花，在孔盖的密封槽内嵌有耐油胶圈。由于测量用的量油尺和取样桶接触孔口容易摩擦产生火花和静电，因此在孔口内侧镶有铜套，防止火花和释放静电。而且在固定的测量点端面设计了360度旋转的铜导向槽（投尺槽）。该型号量油孔主体部分铝合金铸造，材料密实，结构坚固，无砂眼、气孔。密封圈采用丁腈橡胶，耐油及耐乙醇腐蚀，耐老化，可以有效满足油罐密封要求。因此本厂生产的该型号量油孔。设计比较合理、结构简单、安装简便、不受天气、温度影响、保证油品的计量管理及储运安全。

The oil filling hole is a measuring inlet which is used by the service station staff every day, and the oil hole flange plate is connected with a short neck flange plate at the bottom of the oil tank and is arranged on the top of the oil tank, and the oil quantity oil hole is communicated with the inner cavity of the oil tank. At present the widespread use of the amount of oil hole for the translational rotary cover is in not when measured with the common padlock, there are a variety of methods can be the destruction, illegally opened and closed performance is not good, easily lead to oil and gas leakage to pollute environment. Therefore the traditional quantity oil hole can not be effectively used in the modern country to advocate the environmental protection environment. Gas station to the main characteristics of oil and gas recovery of an oil measuring hole: with clamshell closed hole and the ball core sealed double closed design, prevent the leakage of oil and gas. Double padlock structure design, the anti prizing and artificial external damage more difficult. Flip open design, clamshell can be sealed cover and lock locking handwheel, in order to prevent the closed cover and the iron impact sparks, the lid seal is embedded in the groove resistant oil ring in. Due to the measurement of the dipstick and sampling barrel contact hole to friction sparks, and static electricity is produced, so embedded in the inside of the orifice have copper sleeve, prevent sparks and electrostatic discharge. And a 360 degree rotation of the copper guide groove (Tou Chicao) is designed on the fixed measuring point. This type of oil hole part Aluminum Alloy casting material, compact, firm structure, no blisters, pores. A sealing ring with nitrile rubber, oil resistant and corrosion resistant to ethanol, aging resistance, can effectively meet the requirements of sealing oil tank. Therefore, the model of the factory production of oil holes. The design is reasonable, the structure is simple, the installation is simple, and it is not affected by the weather, the temperature, the measurement management of oil products and the safety of storage and transportation.

主要技术参数 Technical Specification

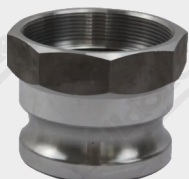
规格 Specifications	DN100	DN80
螺栓孔中心远直径 Bolt hole center circle diameter	180/170	160
总长度 Total length	240	240
工作压力 Working pressure	0.6	0.6
材质 Material	铝合金 Aluminium alloy	铝合金 Aluminium alloy
重量 Weight	7.5	7

快速接头A型 Quick connector A type

A型:一边是卡在母头里的接头，一边是内螺纹的连接丝口

Type A: one side is the joint card in the parent's head, while the internal thread connecting wire port

A type



SIZE	15	20	25	32	40	50	65	80	100	125	150
DIM	1/2	3/4	1	1 1/4	1 1/2	2	1/2	3	4	5	6
A	3/4	21	24	30	38	47	59	76	102	127	154
B	36	39.5	45.5	54	55	60	72	69	72	72	72
C	26	31	39	48	54	66	82	95	122	150	178
D	24	31.3	26.3	45.3	53	63	75.3	91.3	119	145	175

快速接头B型 Quick connector B type

B型:一边是带两个拉耳卡公头的凹槽，一边是外螺纹的丝口

Type B: one side with two lug groove card male head, while the external thread screw

B type



SIZE	15	20	25	32	40	50	65	80	100	125	150
DIM	1/2	3/4	1	1 1/4	1 1/2	2	1/2	3	4	5	6
A	20.9	26.4	33.2	41.9	47.8	59.8	75.2	87.9	113	138.4	163.8
B	45	50	58	66	66	72	79	85	87	91	94
C	29	34	39	45	45	51	52	55	57	58	58
D	42	52	58	72	78	93	107	130	158	188	225

快速接头C型 Quick connector C type

C型:一边是带两个拉耳卡公头的凹槽，一边是有竹节状的软管接头

Type C: one side with two lug groove card male head, one side is a segmented hose connector

C type



SIZE	15	20	25	32	40	50	65	80	100	125	150
DIM	1/2	3/4	1	1 1/4	1 1/2	2	1/2	3	4	5	6
A	14	20	25	32	38	51	65	76	102	128	154
B	65	82	96	110	115	126	134	148	154	169	198
C	36	48	57	65	70	75	82	93	97	111	139
D	42	52	58	72	78	93	107	130	158	188	225

D type



DC type



DP type



快速接头D型 Quick connector D type

SIZE	15	20	25	32	40	50	65	80	100	125	150
DIM	1/2	3/4	1	1 1/4	1 1/2	2	1/2	3	4	5	6
A	18.6	24.1	30.3	38.9	44.8	56.8	72.2	85	110	135.4	161
B	44	49	58	64	66	74	79	83	89	91	93
C	42	52	58	72	78	93	107	130	158	188	225
D	29	34	39	45	45	51	52	55	57	58	58

快速接头DC型 Quick connector DC type

SIZE	15	20	25	32	40	50	65	80	100	125	150
DIM	1/2	3/4	1	1 1/4	1 1/2	2	1/2	3	4	5	6
A	38	44	49	57	59	65	70	71	72	73	77
B	30	35	40	47	48	57	58	59	60	62	62
C	42	52	58	72	78	93	107	130	153	188	225
D	32	39	44	55	63	74	87	105	132	161	191

快速接头DP型 Quick connector DP type

SIZE	15	20	25	32	40	50	65	80	100	125	150
DIM	1/2	3/4	1	1 1/4	1 1/2	2	1/2	3	4	5	6
A	28	31	35	42	45	51	53	56	58	67	67
B	36	39	45	52	55	63	64	68	73	80	80
C	24	31.3	26.3	45.3	53	63	75.3	91.3	119	145	175

快速接头E型 Quick connector E type



SIZE	15	20	25	32	40	50	65	80	100	125	150
DIM	1/2	3/4	1	1 1/4	1 1/2	2	1/2	3	4	5	6
A	38	48	57	64	70	76	80	92	98	111	139
B	73	86	101	116	125	137	144	158	165	183	212
C	14	20	25	32	38	51	65	76	102	128	154
D	24	31.3	28.3	45.3	53	67	75.3	91.3	119	145	175



F type



F type Flange

快速接头F型 Quick connector F type

SIZE	15	20	25	32	40	50	65	80	100	125	150
DIM	1/2	3/4	1	1 1/4	1 1/2	2	1/2	3	4	5	6
A	14.5	21	24	30	38	47	59	76	102	127	154
B	51	53	63	72	74	80	89	96	102	104	108
C	36	39.5	45.5	54	55	60	72	69	72	72	72
D	20.9	26.4	33.2	41.9	47.8	59.6	75.2	87.9	113	138.4	163.8

快速接头F型法兰 Quick connector F type Flange

SIZE	15	20	25	32	40	50	65	80	100	125	150
DIM	1/2	3/4	1	1 1/4	1 1/2	2	1/2	3	4	5	6
A	14.5	21	24	30	38	47	59	76	102	127	154
B	51	53	63	72	74	80	89	96	102	104	108
C	36	39.5	45.5	54	55	60	72	69	72	72	72
D	20.9	26.4	33.2	41.9	47.8	59.6	75.2	87.9	113	138.4	163.8

ABOUT US

We are the gas station equipment supplier in Hydrogen Energy, Liquid Natural Gas, Compressed Natural Gas, Liquid Petrol Gas, Fuel, Adblue, EV charger, Home Energy Storage, Industrial Energy Storage area. If you are doing the same range business, if you are interested in new energy, welcome you to visit us!

We have many certificates like ISO, CE, ATEX, PED, TUV, PEI, CPA, CMA, Explosion proof certificates and soon. We have our own Patent and copyrights.

Wish our products, our service can give you a strong impression.

Well Quality We Done! Well Service We Done! Well Price We Done!

We are Welldone Group!

HONOR



Fuel Dispenser ATEX



LNG Dispenser ATEX



Mobile Gas Station ATEX



LNG Dispenser PED



Submersible Turbine Pump ATEX



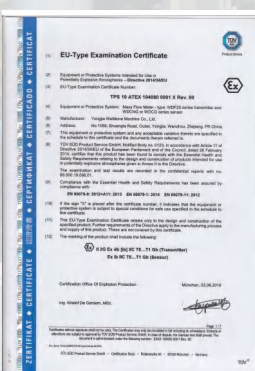
Junction Box ATEX



LPG dispenser ATEX-D



LPG dispenser ATEX-B



Mass Meter ATEX



Positive Displacement Meter CE



Mobile Gas Station CE



Adblue Dispenser CE



LNG Dispenser CE



CNG Dispenser CE



LPG Dispenser CE



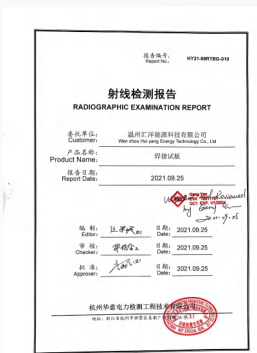
Fuel Dispenser CE



EV Charger TUV



PEI



Radiographic Examination Report



CNG Dispenser Explosion Proof CMA



LNG Dispenser Explosion Proof CMA



PQR Test Report



Patent Certificates For Management System



Factory ISO



LNG Dispenser CPA



CNG Dispenser CPA



Welldone Copyrights



E-BOOK